



LAMOT[®]

VALVE & ARRESTOR

A GROTH CORPORATION BRAND

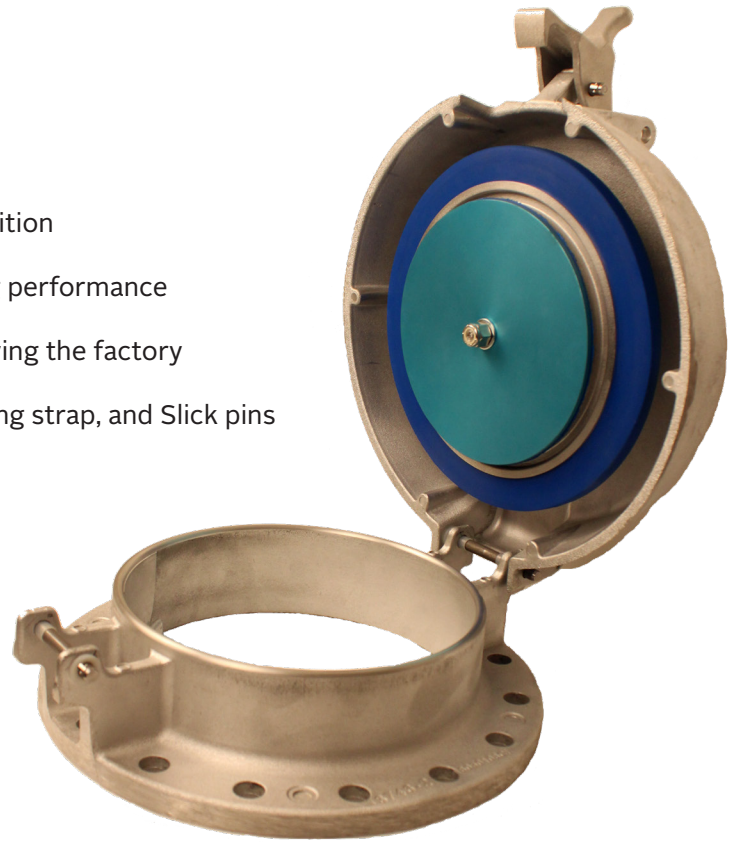
MODEL L12-TH

Not only looks good, it outperforms the competition

Precision tolerances to provide a superior sealing performance

Every unit is tested and documented prior to leaving the factory

Standard product includes Inconel springs, bonding strap, and Slick pins

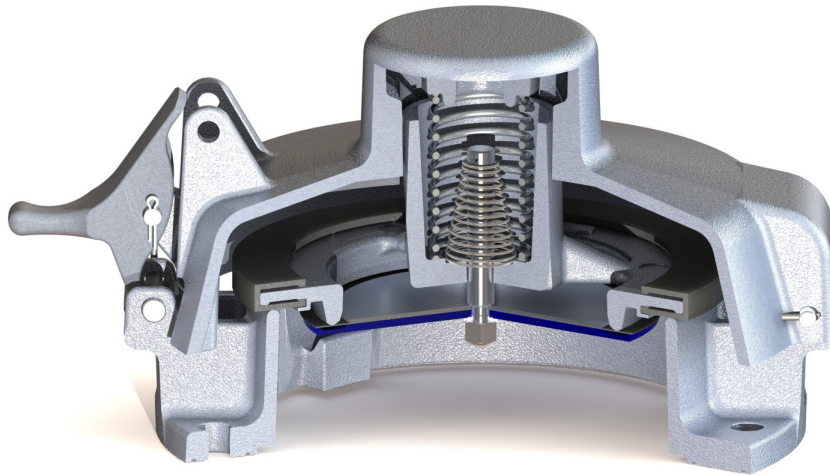


WHY THIEF HATCHES ARE REQUIRED

- Saves money by avoiding environmental standards fines
- Protects tank from overpressure/vacuum when sized properly*
- Minimizes evaporation emissions
- Reduces atmospheric corrosion of tank
- Required to meet industry compliance

SUPERIOR SEALING PERFORMANCE

The leakage is less than 1 SCFH of Air @ 90% of the set pressure.



FEATURES & BENEFITS

Superior Sealing Performance

- Precision machining and manufacturing to accomplish superior sealing
- Ultra-tight sealing reduces product leakage and fugitive emissions
- Active envelope pressure gasket that expands around the base to increase seal

Industry Leading Flow Rates

- Higher flow capacity to protect from excessive pressure build up
- Precision machining and manufacturing to accomplish high flow rates

Direct Replacement & Easy Maintenance

- Direct replacement for any standard round API 12 thief hatch
- Designed for easy maintenance, thus reducing downtime and lowering operational cost
- Incorporates a mechanical lock system to be used with a pad lock or lock out bar
- Standard product includes Inconel springs, bonding strap, and Slick pins

TECHNICAL DETAILS

- Size: 8" (200 mm)
- Bolting: API 12
- Available Pressure Settings:
4, 6, 8, 10, 12, 16, 24 & 32 osig
- Available Vacuum Settings:
0.4, 0.9 & 3.5 osig
- Leak Rate:
1 SCFH air @ 90% of set pressure
- Materials of Construction:
 - Casting: Aluminum (Non-Sparking)
 - Envelope Gasket: HNBR, FKM, or Fluorosilicone
 - Vacuum Diaphragm: HNBR, FKM, Fluorosilicone, or Fluoropolymer
 - Springs: Galvanized Steel, or Inconel® X-750
- Optional: Polyester/PTFE Coating
- Accessories: Flange (base) Gasket, Mounting Kit